

Data Discovery and dissemination via OGC Services

FMI Erdas Apollo offers a state-of-the-art spatial data infrastructure for distributing products and spatial data discovery and archiving.

The interface allows you to browse and download a wide range of data products from FMI for free, using OGC standards.

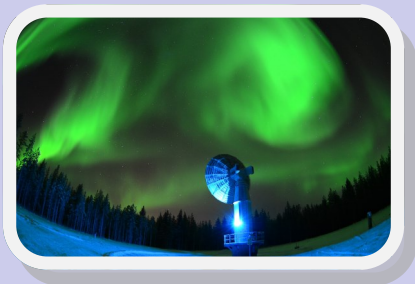


Photo taken by Matias Takala

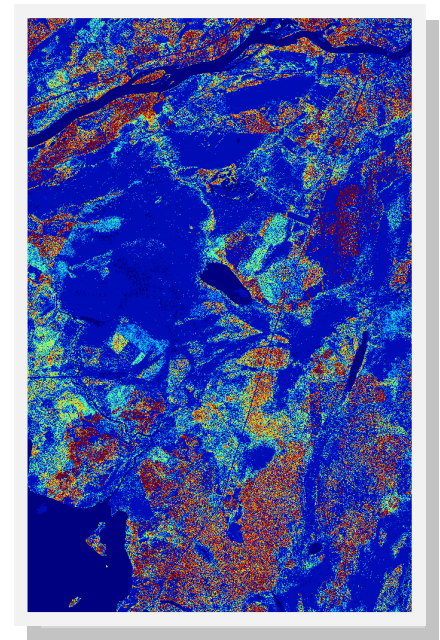


ERIK PALMÉNIN AUKIO I
00560 HELSINKI

E-mail: support.erdas@fmi.fi

FMI Erdas Apollo

Reliable Data Dissemination and Spatial Data Discovery Services



FMI Erdas Apollo
Email: Mwaba.kangwa@fmi.fi
Or : support.erdas@fmi.fi

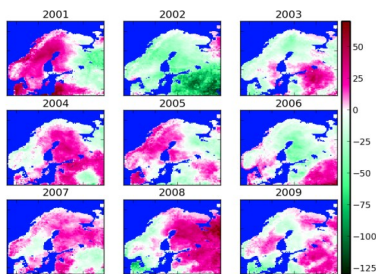
Tel: +358 50 5629996

FMI Erdas Apollo

The Finnish Meteorological Institute Arctic research Centre FMI ARC provides first-hand information about the atmospheric, terrestrial and marine environments. It also offers satellite reception, data processing, archiving and distribution services for both Finnish and international partners. Due to its high-latitude location FMI ARC provides ideal facilities for versatile observations of arctic low temperature conditions. FMI Erdas Apollo is data dissemination interface where users can browse, view, and download data and products using OGC standards. It is implemented on a geospatial platform that enables high performance OGC web services. Some of the services include; web map services (WMS), Web coverage services (WCS) and Web Feature service.

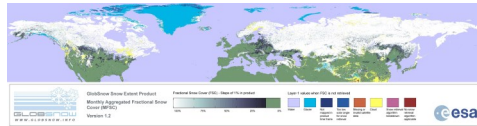
Current Available Datasets

The current archive is composed of raster products from various projects such as SnowCarbo, Globsnow and CryoLand. The SnowCarbo collection covers yearly and monthly regional CO2 balance maps from 2001 to 2009. These are available via wms and wcs services .



SnowCarbo Regional CO2 Balance 2001-2009 [units: g/m2/year]

The GlobSnow collection includes snow water equivalent SWE and snow extent SE products.



Example GlobSnow SE product

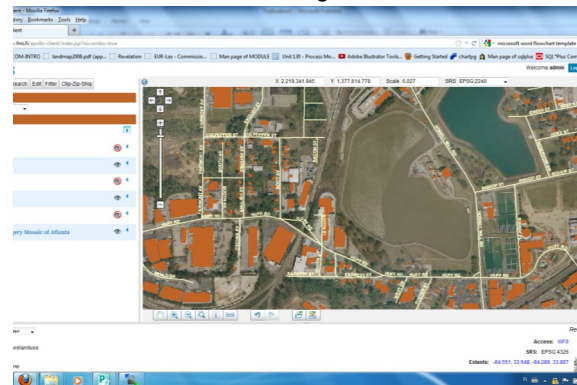
The CryoLand collection includes PanEuropean Snow water equivalent product. This product is available in near real time.

Coming soon Datasets

- Standardized SnowPack Index (sample datasets available)

Access to the Datasets

The datasets are accessible through the FMI Erdas Apollo web client. From the client, the user has an option to first view the data, download data from a bounding box of interest, or download the original data.



FMI Erdas Apollo web client.. Visit <http://erdas-apollo.fmi.fi/apollo-client/index.jsp?nocombo=true>

Others ways of accessing the data are through

1. OGC compliant Http requests
2. Any OGC compliant client for example qgis, gdal_wcs, curl, matlab wms

Using FMI Erdas Apollo as your Data dissemination point

Contact:

Jouni Pulliainen (Jouni.Pulliainen@fmi.fi)

Mwaba Kangwa (Mwaba.Kangwa@fmi.fi)

**For more information
visit our website:
<http://erdas-apollo.fmi.fi>**

Project website links:

<http://snowcarbo.fmi.fi>

<http://www.globsnow.info/>

<http://www.cryoland.eu/>



FMI

ERIK PALMÉNIN AUKIO I
00560 HELSINKI