

ACTION B.5:

Retrieving climate change indicators
by models

FMI, METLA, UHEL

The climate change indicators:

vegetation active season

carbon uptake rate

forest and soil respiration rates

wetland methane emission rates

vegetation and soil evaporation rates

soil moisture

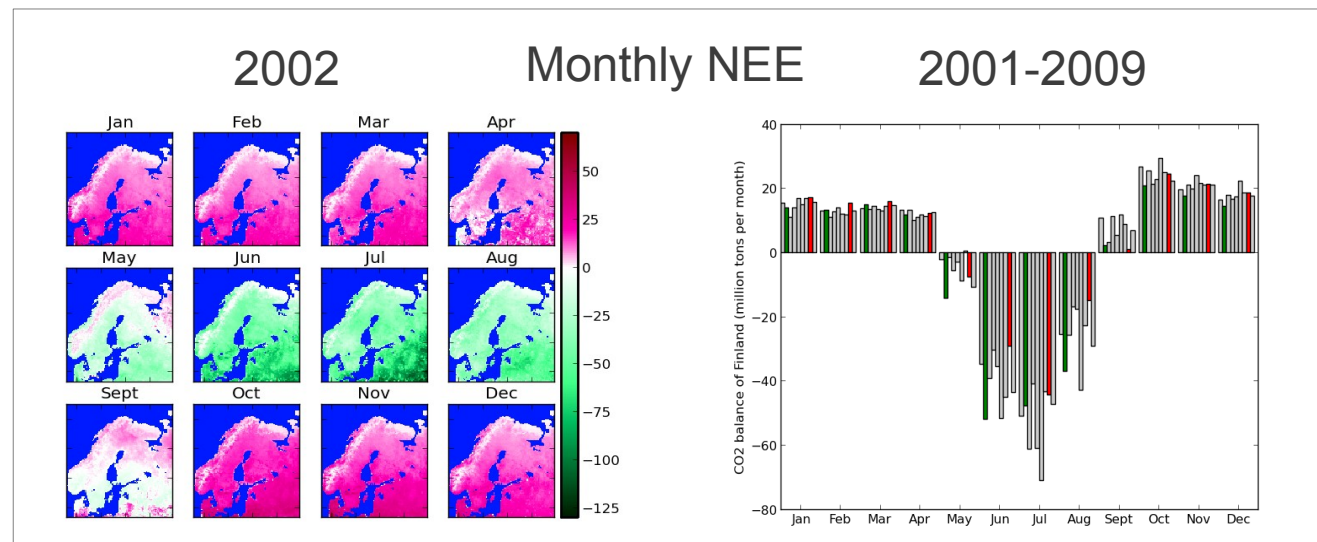
soil frost period

snow cover extent

snow depth

albedo

– impact of snow and snow interception



Methods

Runs from 1980s to 2100 with PreLes and JSBACH.

- Input data production
 - Re-analysis data + CMIP5 into model grid
- Running the models

Retrieval of climate change indicators.

- Postprocessing the ecosystem and land model data